



## DETAILS & INFORMATION

The Sicamous Ferry runs on a continuous loop from the Martin Street Boat Launch to Sicamous Beach Park and Shuswap North Okanagan Rail Trail (at 0.5km trail start)

- Due to limited capacity, **back-to-back rides are NOT PERMITTED**
- Please keep pets leashed & under control at all times and clean up after them
- Store bicycles in designated bike racks

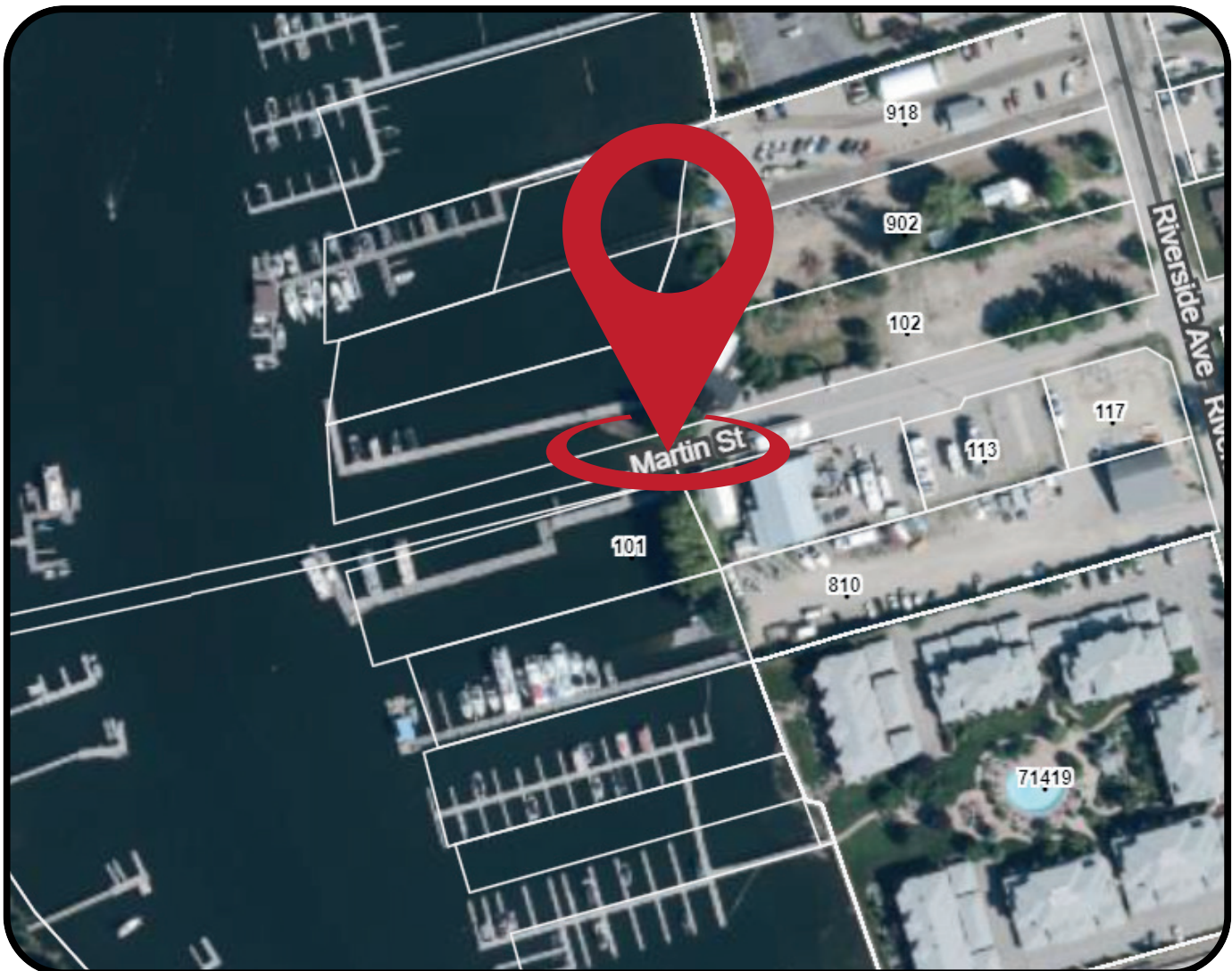
**\*4-11 Passenger  
Maximum per trip**



**SICAMOUS FERRY SOCIETY**  
*YOUR RIDE TO THE BEACH & RAIL TRAIL*

# SICAMOUS FERRY PICKUP/DROPOFF LOCATIONS

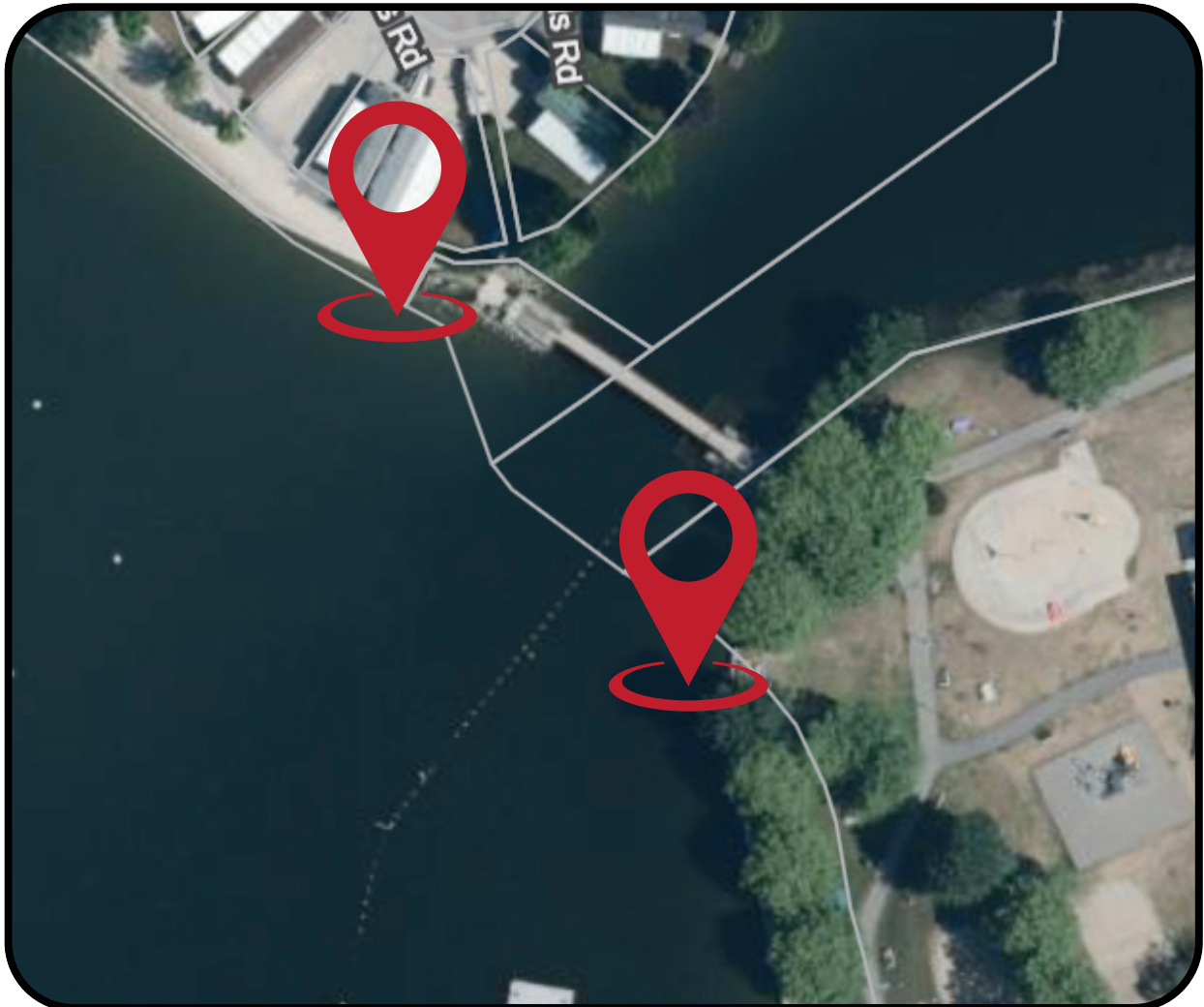
## MARTIN STREET BOAT LAUNCH





# SICAMOUS FERRY PICKUP/DROPOFF LOCATIONS

## SICAMOUS BEACH PARK (WATER LEVEL DEPENDENT)

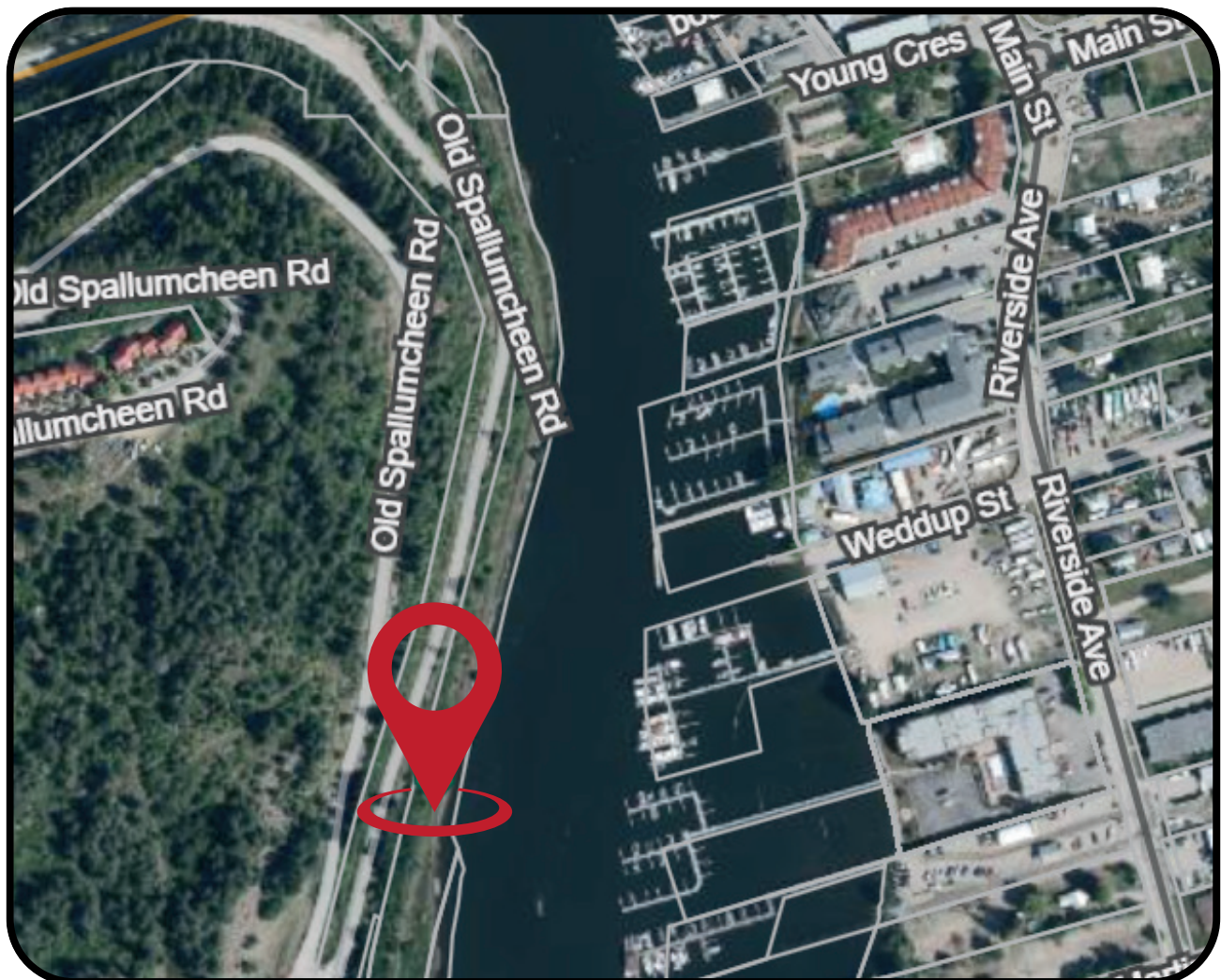






## SICAMOUS FERRY PICKUP/DROPOFF LOCATIONS

# SHUSWAP NORTH OKANAGAN RAIL TRAIL





# SICAMOUS FERRY WAIVER & RULES OF USE

## **NOTICE TO ALL PASSENGERS**

**BY BOARDING THE FERRY, YOU VOLUNTARILY AGREE TO THE FOLLOWING TERMS, RULES, AND LIABILITY WAIVER. IF YOU DO NOT AGREE, DO NOT BOARD THE FERRY.**

## **UNACCOMPANIED MINORS**

Children/Youth/Students must be 12 years of age or older to travel unaccompanied by an adult on the Ferry operated by the Sicamous Ferry Society. Children under the age of 12 are not permitted to travel alone and must be accompanied by a parent, guardian, or other responsible adult.

The Sicamous Ferry Society will not be responsible for unaccompanied minors while they are aboard our ferry or any vessel operated by the Sicamous Ferry Society.

## **USE AT OWN RISK**

This is a FREE public service provided by the Sicamous Ferry Society. All passengers travel at their own risk. The Sicamous Ferry Society is not liable for any injury, loss, or damage arising from use of this service.

## **PASSENGER CONDUCT**

Follow all Captain / Crew instructions. Disruptive, unsafe, or intoxicated behavior is prohibited. Life jackets or PFDs must be worn when directed.

## **CAPACITY, BOARDING & BIKES**

First-come, first-served. Boarding may be refused due to capacity or safety concerns. Bikes must be WALKED ON AND OFF the vessel, riding a bike on and off the vessel is prohibited.

## **PROHIBITED ITEMS**

No alcohol, illegal substances, weapons, or hazardous materials. No large recreational equipment or items allowed on board without prior approval.

## **PETS**

Leashed, well-behaved dogs allowed. Owners are responsible for control and cleanup.

## **CANCELLATIONS & DELAYS**

Service may be delayed or canceled due to weather, safety, or mechanical issues. The Sicamous Ferry Society is not liable for missed connections or personal inconvenience.

## **LIABILITY WAIVER**

By boarding, I hereby release the Sicamous Ferry Society, its volunteers, contractors, and affiliates from any and all liability for injury, loss, or damages sustained while using this ferry. I assume all risks associated with travel on the ferry.

## **PHOTO CONSENT**

By participating, you consent to the non-commercial use of photos or videos for promotional and public information purposes unless you notify us otherwise.

## **QUESTIONS OR CONCERNS?**

**Contact: Sicamous Ferry Society**

**Email: [sicamousferrysociety@gmail.com](mailto:sicamousferrysociety@gmail.com)**



## WHERE TO PARK



There are public parking options along Finlayson Street and Riverside Ave. Find more parking options by going to [exploresicamous.ca](https://exploresicamous.ca) and [sicamous.ca](https://sicamous.ca)

- Beach access via Silver Sands Road Parking Lot is open 7 days/week
- Beach access via Finlayson St pedestrian walkway is open evenings & all day on Sunday



# IMPORTANT INFO: STARTING THURSDAY, JULY 24

**NEW Ferry pickup/dropoff locations:**  
**Martin Street Public Boat Launch**  
**Shuswap North Okanagan Rail Trail**  
**Marker 0.5km**

**New Hours of Operation:**  
**Everyday 9am-5:30pm**

**PLEASE NOTE:**

**\*The Ferry **WILL NOT** be stopping at the Finlayson Street Dock. Beach Park Pickup/Dropoff location remains the same.**

**\*Hours are subject to change due to unsafe weather conditions or other circumstances beyond our control**



# The Ferry runs on a continuous loop from Martin Street Boat Launch, Sicamous Beach Park and Rail Trail 0.5km Pickup/Dropoff Points

